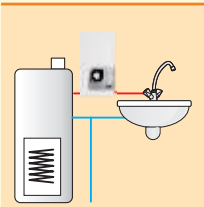


electronic Bonus

**suitable for solar panels
and heat pumps**

electric instantaneous water heater

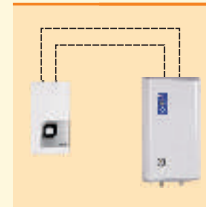
Most important advantages



Suitable for cooperation with solar panels and heat pumps
Can work on already pre-heated water. Inletting water temperature up to 70°C.



Electronic control system ensures stability and modulation of water temperature from 30°C to 60°C.



Priority switch
Cooperation with another electric high power consumption appliance.



Water flow sensor
Sensor operates at very low pressure 0,1MPa and water flow as little as 2,5 l/min.

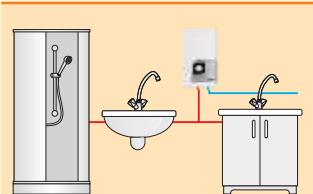


Copper shielded heating elements
Reliable technology ensures long life, resistance to water decay and air bubbles.

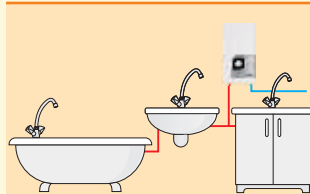


Modern design

Application



from 12kW



from 18kW

Technical data

Type	KDE Bonus electronic								
Rated power	kW	9	12	15	18	21	24	27	
Rated voltage		400V 3~							
Rated current	A	3x13,0	3x17,3	3x21,7	3x26,0	3x30,3	3x34,6	3x39,0	
Fuse rated current	A	16	20	25	32	40	50		
Min. connecting wires section	mm ²	4x1,5	4x2,5	4x4			4x6		
Efficiency (at 30°C/ 86°F temp. rise) l/min		4,3	5,8	7,2	8,7	10,1	11,6	13,0	
Supply water pressure	MPa	0,1 ÷ 0,6							
Dimensions	mm	440 x 245 x 120							
Weight	kg	~ 5,1							
Inlet and outlet section		Gw 1/2"							
Distance between inlet and outlet	mm	~100							
Safety class		IP 25							

All technical data is based on standards of Central European countries. However, Kospel S.A. is fully flexible to adjust its appliances to other standards.

